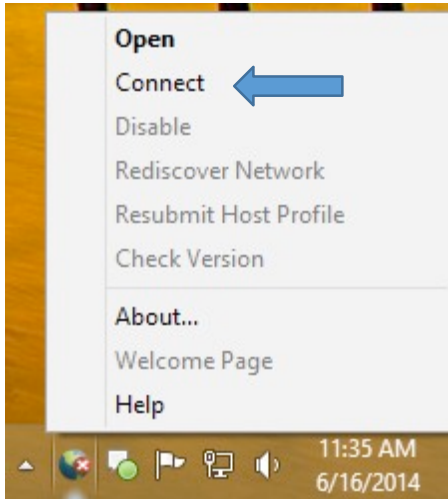


## Passcode Method using GlobalProtect & Duo 2FA

### Step 1. Connect to the VPN with Windows or MAC

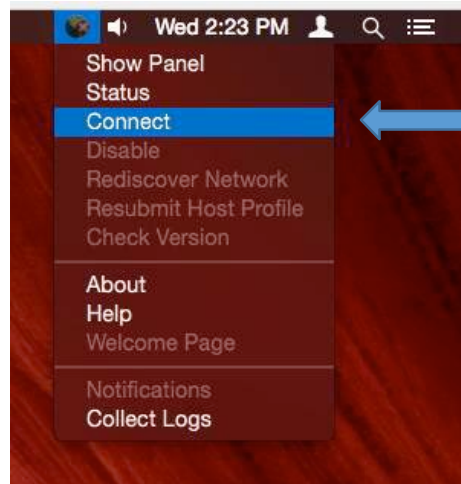
#### Windows

Find the GlobalProtect VPN client in your system tray. This icon resembles the Earth. Right click on the GlobalProtect icon. Select **Connect**.

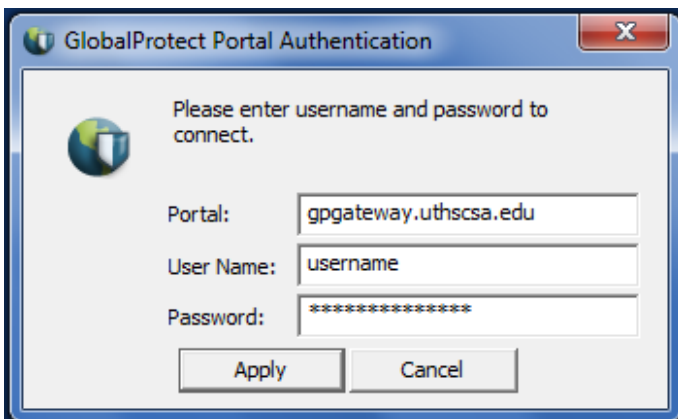


#### MAC

Find the GlobalProtect VPN client in your menu bar. The icon resembles the Earth. Click on the GlobalProtect icon. Select **Connect**.



### Step 2. Logon with your Username and Password

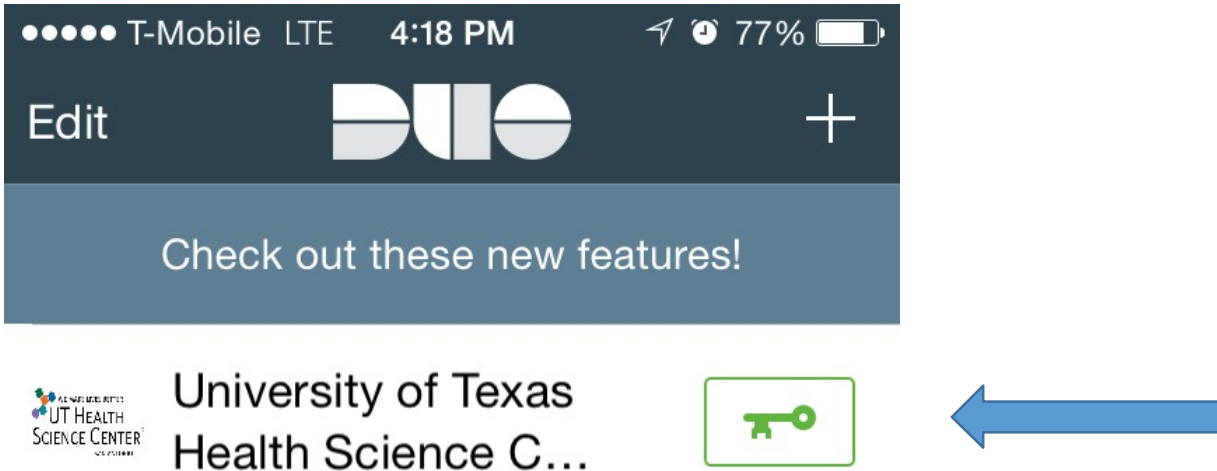


The Options Window will show up.

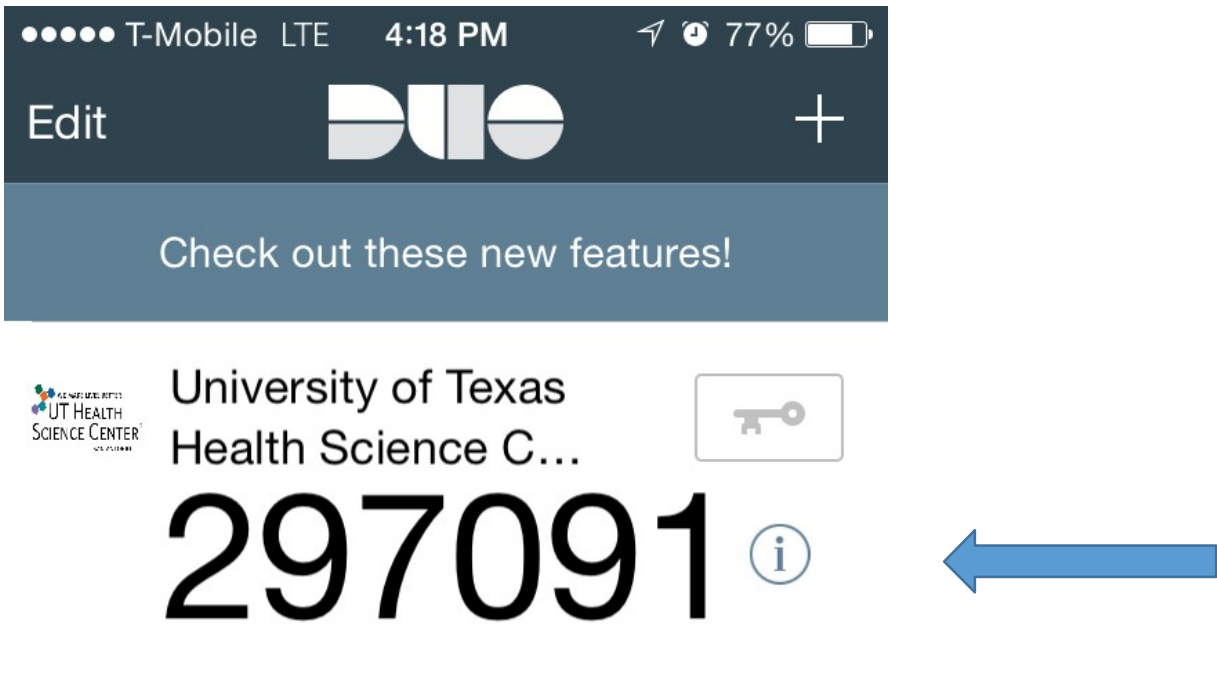


Step 3. Open your Duo App on your Smart Phone.

Step 4. Tap the “Key” next the University of Texas Health Science Center name.



The Duo App will produce a number string like shown below. This is the Passcode.



Step 7. Enter the Passcode in the Options Box and click OK.

