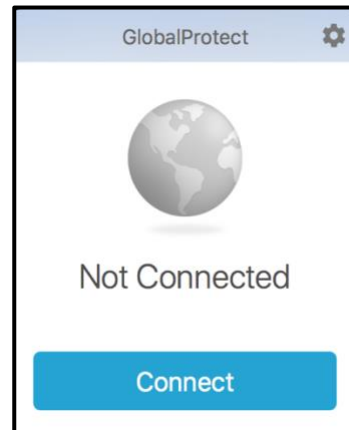


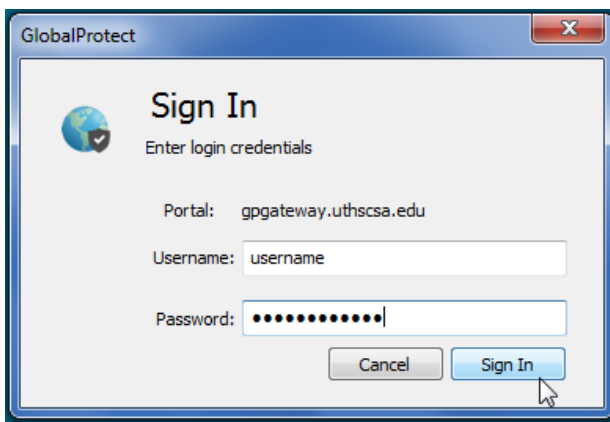
Passcode Method using GlobalProtect & Duo 2FA

1. Find the GlobalProtect VPN client in your system tray or menu bar. This icon resembles the Earth. Click on the GlobalProtect icon. Select **Connect**.

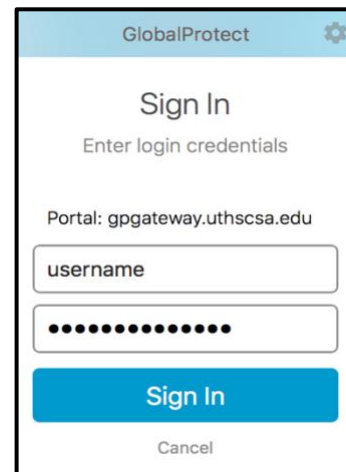
Windows:  Mac: 



2. Enter your UTHSCSA username (lowercase only) and password in the appropriate fields. (The window may vary depending on the device.)



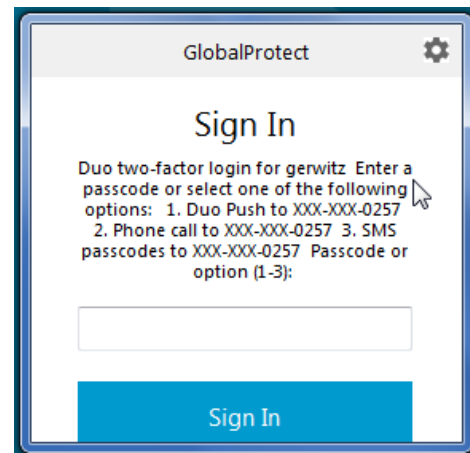
OR



3. The Authentication window will appear. (The window may vary depending on the device.)

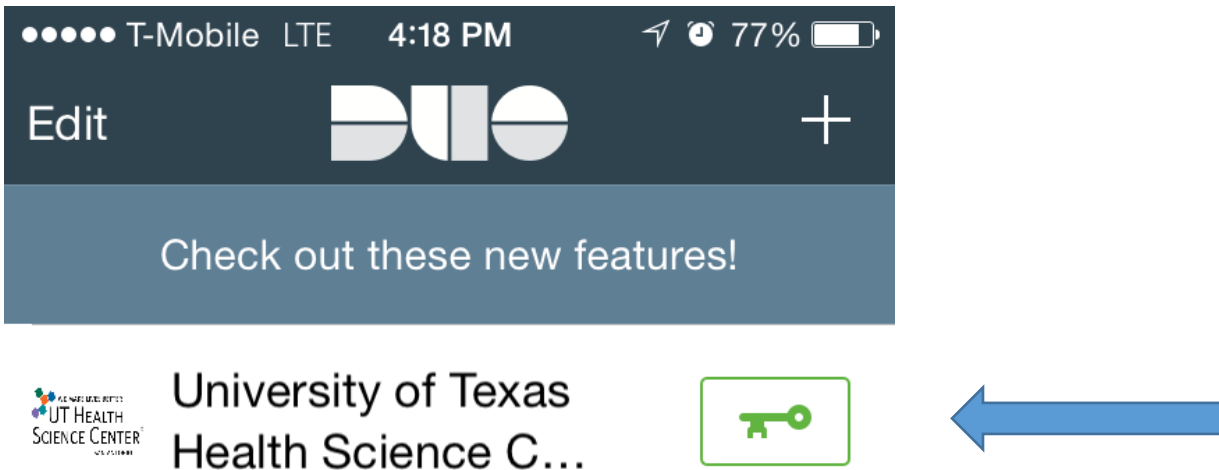


OR

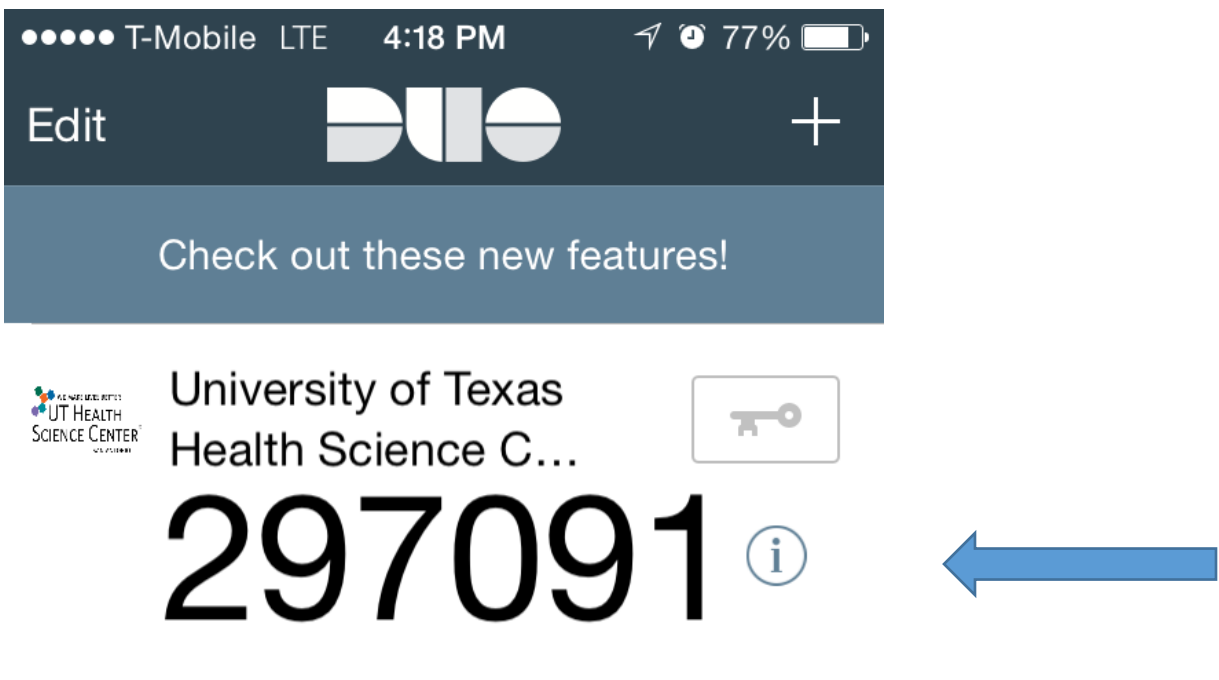


4. Open your Duo App on your Smart Phone.

5. Tap the "Key" next the University of Texas Health Science Center name.



The Duo App will produce a number string like shown below. This is the Passcode.



6. Key in the Passcode in the Options Box and click OK.

